

**The Jalasoft Smart Management Packs for HP ProCurve Switches deliver enterprise ready monitoring** of your network environment. You can monitor your network proactively and be aware of any potential problems that might occur, verify the status of your interfaces and ports, CPU load, traffic and much more. All information is forwarded efficiently to Microsoft System Center Operations Manager which creates a one stop interface to see the status of your servers and network infrastructure.

Alerts and performance data are **visible in Ops Mgr** and will help you take action and prevent any downtime.

A large number of **predefined rules** are provided with the Jalasoft Smart Management Pack for HP ProCurve Switches. Installation is quick and simple and starting to monitor your network is just a matter of dragging and dropping the rules on the specific devices.

This is made possible through the use of Xian Network Manager Io, the platform that runs the Smart Management Pack; no complicated programming or scripting is needed. You can also configure **syslog filters** to forward syslog alerts to Ops Mgr and monitor single interfaces as an object, simplifying the monitoring of devices with **distributed applications**.

To analyze the behavior of the device for a longer period of time, the HP ProCurve Switches Smart Management Pack has a set of **reports** that can be executed from the Ops Mgr Reporting Console.

## Rule Parameters

An easy wizard lets you configure the rule parameters. All rules have by default three steps: rule parameters, active rule options and schedule.

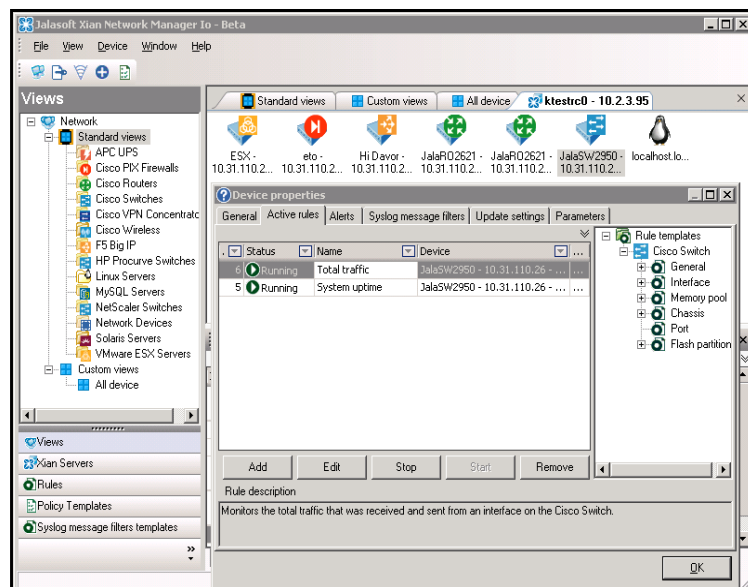
### Parameters

You can configure when an alert will be sent to Ops Mgr. In many cases, this will

be when the value is over or under a certain threshold.

However, for status based rules you can choose to generate an alert when the status changes or when it becomes a certain value (e.g. interface operational status: up, down, testing, unknown, or dormant).

For those rules related to interfaces, it is possible to select the interfaces where you want to apply the rule and define their individual thresholds. This way you can fine-tune the Xian environment.



### Active rule options

The severity level is sent to Ops Mgr when a rule meets the selected criteria. Ops Mgr organizes the alerts by severity. With this option you can predefine each alert with a different level of severity (debug, informational, warning, error or critical), define the collection of performance counters to be used in performance data views or Xian Reports, rename the rule, and enable debug mode for the active rule.

### Schedule

You can set the interval between each execution of the rule. This can vary within a range of seconds, minutes or days. When setting this step take into account

that a short interval will consume more system resources.

## Rules

### HP ProCurve Switches performance and status rules\*

#### General

- Attempt failed TCP connections
- CPU Usage
- Device availability
- Established TCP connections
- Open active TCP connections
- Open TCP connections
- Selftest result
- System uptime
- UDP open ports

#### Interface

- Failed reassembly requests
- Fragmentation failed
- Fragments created
- Incoming discarded packets
- Incoming error packets
- Incoming segments
- Incoming traffic
- Interface operational status
- Outgoing discarded packets
- Outgoing error packets
- Outgoing segments
- Outgoing traffic
- Reassembly requests
- Total discarded packets
- Total error packets
- Total segments
- Total traffic

#### STP

- STP status

#### MAU

- MAU auto-negotiation remote fault advertised
- MAU auto-negotiation fault received
- MAU auto-negotiation status

#### Port

- Port discarded frames
- Port GVRP status
- Port incoming frames
- Port outgoing frames

- Port total frames

#### Sensor

- Sensor failures
- Sensor status
- Sensor warnings

#### Buffer

- Deleted corrupted message buffers
- Deleted corrupted packet buffers
- Failure to obtain message buffers
- Failure to obtain packet buffers
- Free message buffers
- Free packet buffers

#### Memory

- Allocated global memory
- Allocated local memory
- Free global memory
- Free local memory

\*Some rules may not be applicable to specific device models.

## Supported Models

The Xian Io Smart Management Pack for HP ProCurve Switches supports almost all types of the HP ProCurve Switches Series. If you want to obtain the updated list of supported devices or if you are interested in adding support for new models, please contact us.

## System Requirements

Minimum requirements to install Xian Io Smart Management Pack for HP ProCurve Switches for Microsoft System Center Operations Manager are:

- Windows server 2008 SP1 or higher
- SQL Server 2005 SP1 or higher
- .NET Frameworks 4.0 or higher
- Message queuing 2.0 or higher
- System Center Operations Manager 2007 R2 or 2012
- SNMP connectivity to the devices that need to be monitored